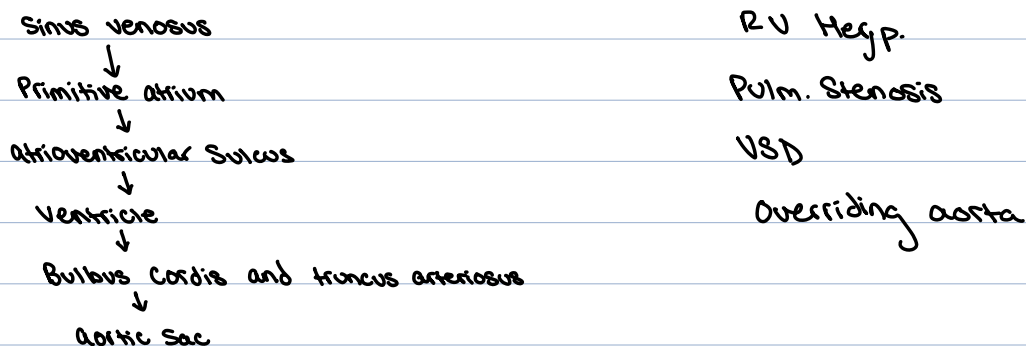


Cardiac loop prior to septation



Thoracic anatomy tips

Structures that pass through the thoracic inlet

"VET CATS"

Veins, esophagus, trachea, Common carotid arteries, thoracic duct, Sympathetic nerves

Structures that leave or enter the thoracic cavity through the diaphragm

"A very smart cat digs every cave"

Aorta, Azygous vein, Sympathetic trunks, Cisterna Chyli (thoracic duct), Dorsal vagal trunk,

Esophagus, Ventral vagal trunk, Caudal vena cava